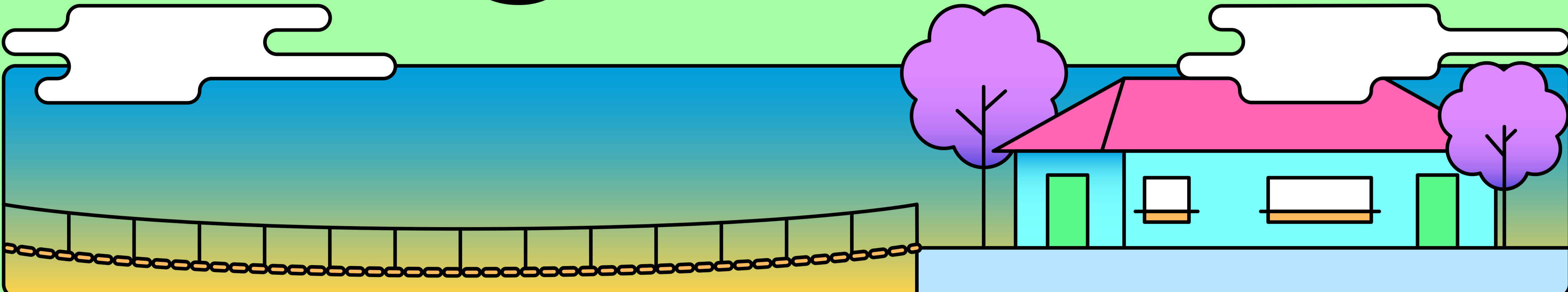


Help. Hope. Change.

Bridge to Home helps individuals and families in the **Santa Clarita Valley** move from homelessness to housing.

[VOLUNTEER](#)
[DONATE NOW](#)



Our Mission

The mission of Bridge to Home is to provide shelter, support services, and permanent affordable housing and to advocate for sustainable solutions for our neighbors in need.

If you or someone you know is experiencing homelessness, please call 661-254-4663.

[Click here for additional supportive resources in the area](#)

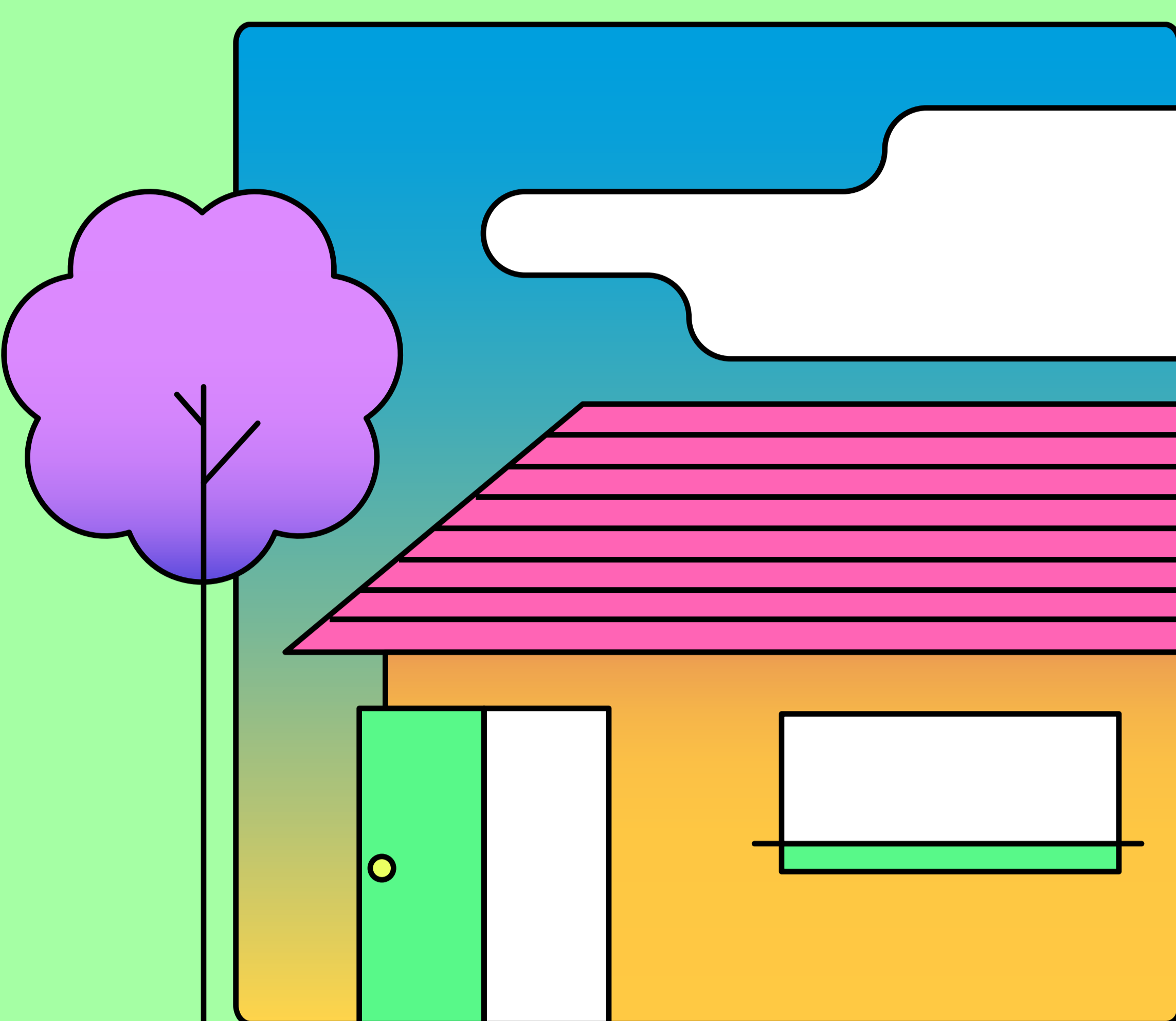
By addressing the conditions and causes of homelessness, we are able to provide the bridge to home for our neighbors who are vulnerable to homelessness.

[Click here to read client stories of help, hope, and change](#)

BTH serves over 1,000 people annually. Our shelter has space for 60 individuals and is open 365/24/7. At our year-round Client Services Center, staff and volunteers help people access and retain housing. Through our Feeding It Forward program, we offer dinner to anyone who comes to our shelter hungry Tuesday-Thursday, every week.

Bridge to Home (BTH) is governed by an all-volunteer [Santa Clarita Valley Board of Directors](#).

Bridge to Home SCV is a non-profit 501 (c)(3) corporation EIN 95-4587823. Donations may be tax deductible.



#HELPHOPECHANGE #BTH25 #btohomescv

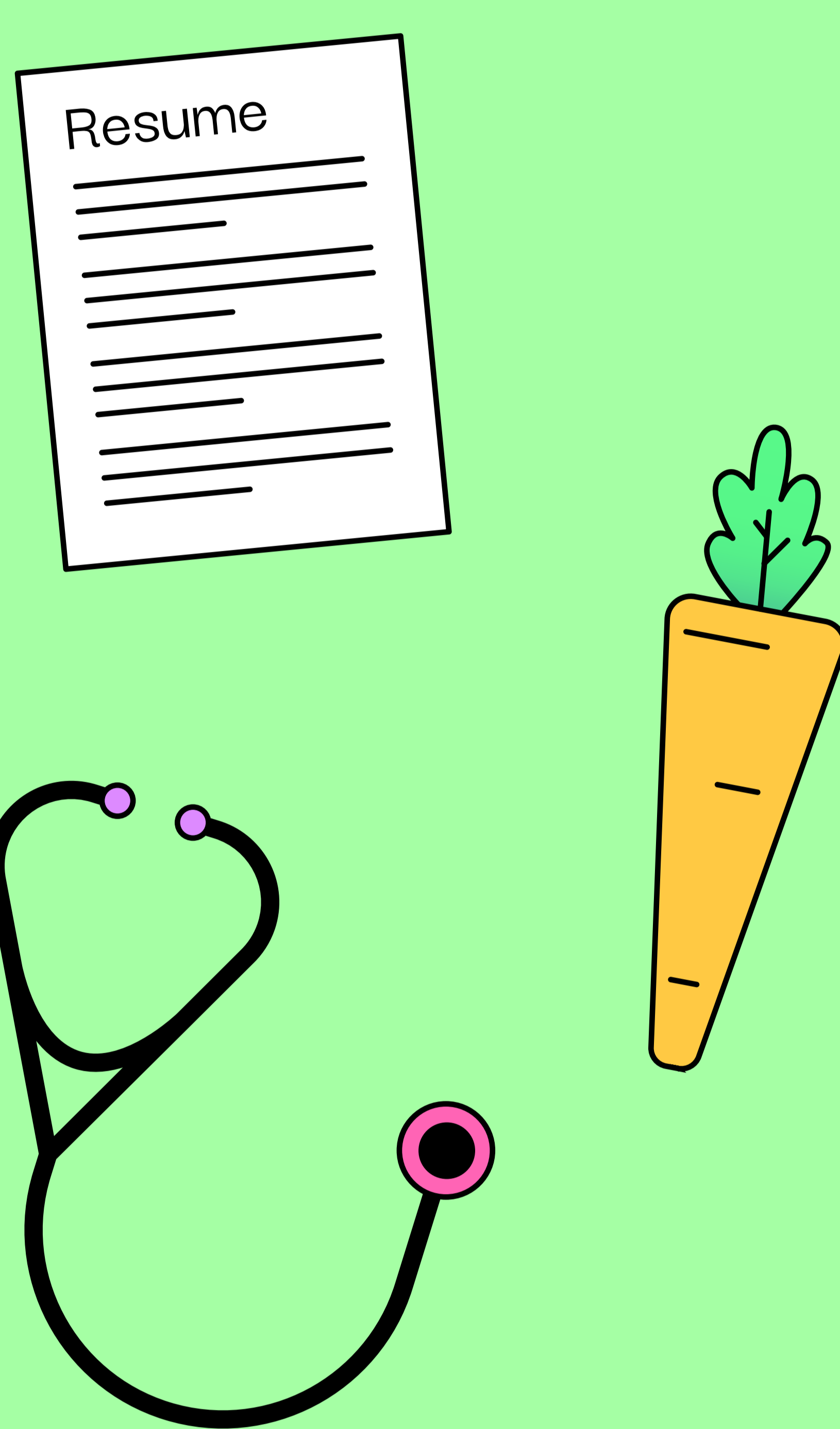
Our Programs

At any given time, there are approximately 600-1000 individuals experiencing homelessness in the Santa Clarita Valley. Homelessness can happen to anyone and everyone's story is different.

Homelessness is solved by an individualized plan that leads to permanent housing with ongoing supports as needed.

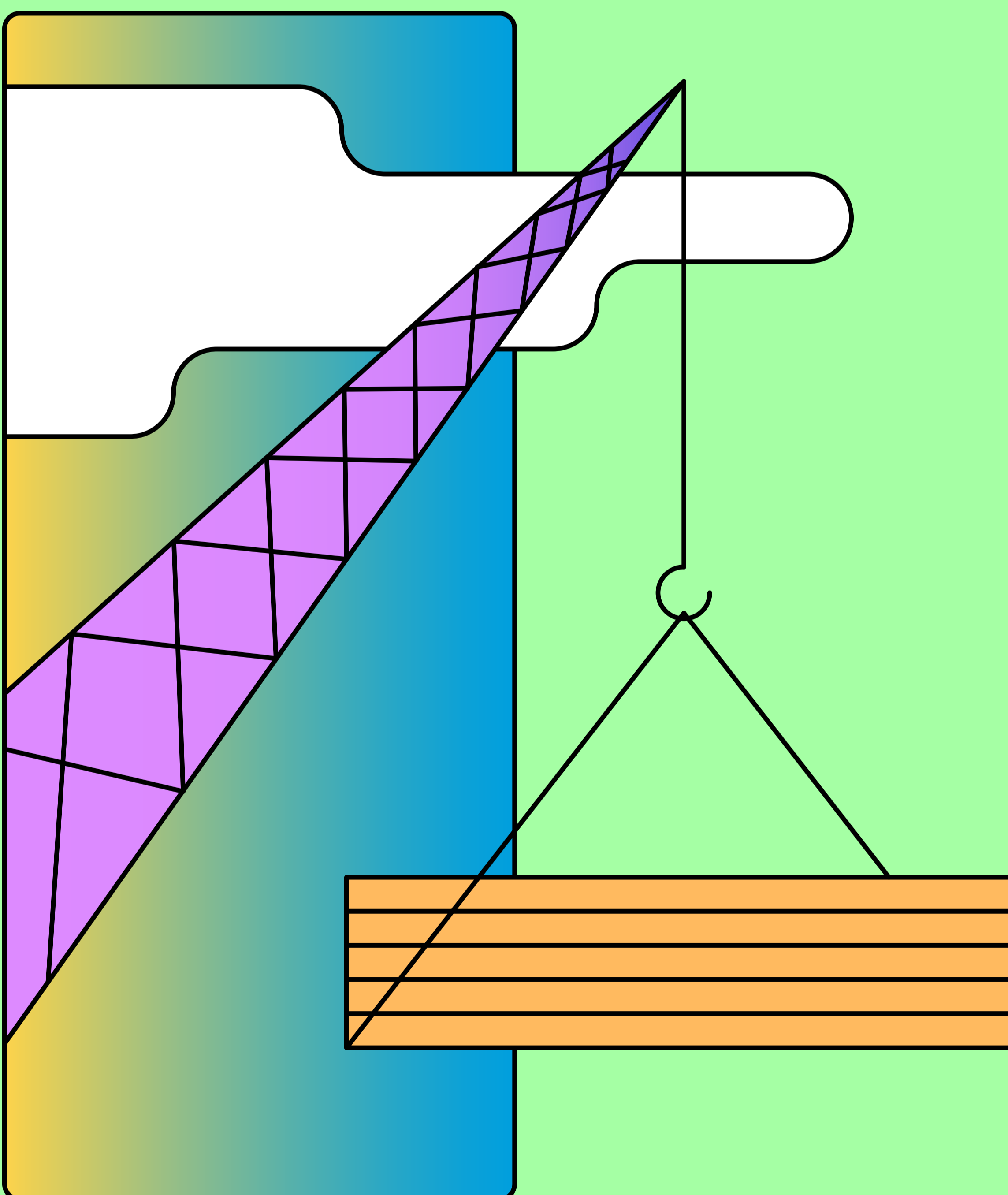
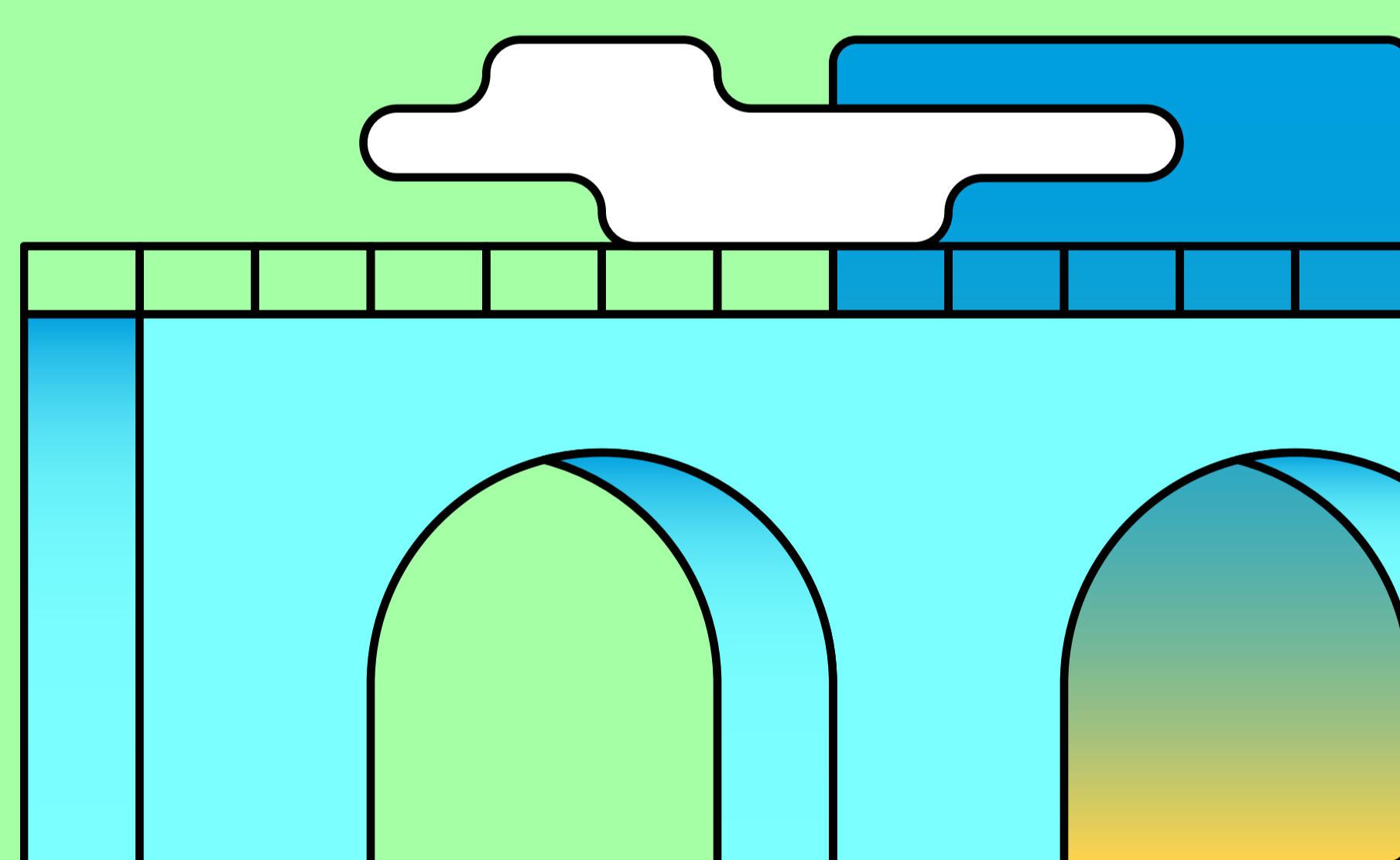
[Join us in ending homelessness in Santa Clarita.](#)

[LEARN MORE](#)



ENGAGEMENT | HOUSING PLACEMENT | SUPPORTIVE SERVICES

Building the Bridge



We're building a brand new facility!

The new facility will provide interim housing for 60 individuals and, in the first family shelter in this region, there will be 8 separate apartment-style units that can accommodate up to 32 people. We anticipate serving over 1,000 unduplicated individuals every year at this new facility.

Every space in the new facility is thoughtfully designed to help the people we serve bridge their way out of homelessness and into permanent housing - from indoor plumbing and places to meet to engage in workshops, to a technology center with access to education and job training. With a large, functional kitchen our volunteers who prepare and serve meals will be able to do so with greater capacity.

[Support this project by making a donation today!](#)

[Donate a personalized brick to be placed at the shelter.](#)

[ABOUT THE NEW SHELTER](#)

Get Involved



Bridge to Home has helped thousands of families get back on track. We can continue to change people's lives, but we can't do it alone.

Urgent Needs

Paper plates, napkins, cups; Coffee; Individual wipes; Sugar; Creamer; Men's white T-shirts; Men's boxers; Razors; etc.

[SIGN UP](#)

Volunteer Opportunities

Bridge To Home is always seeking numerous volunteers who can share their skills and talent.

[LEARN MORE](#)

Make a Donation

We can help people. We can help people change their lives. But we can't do it alone.

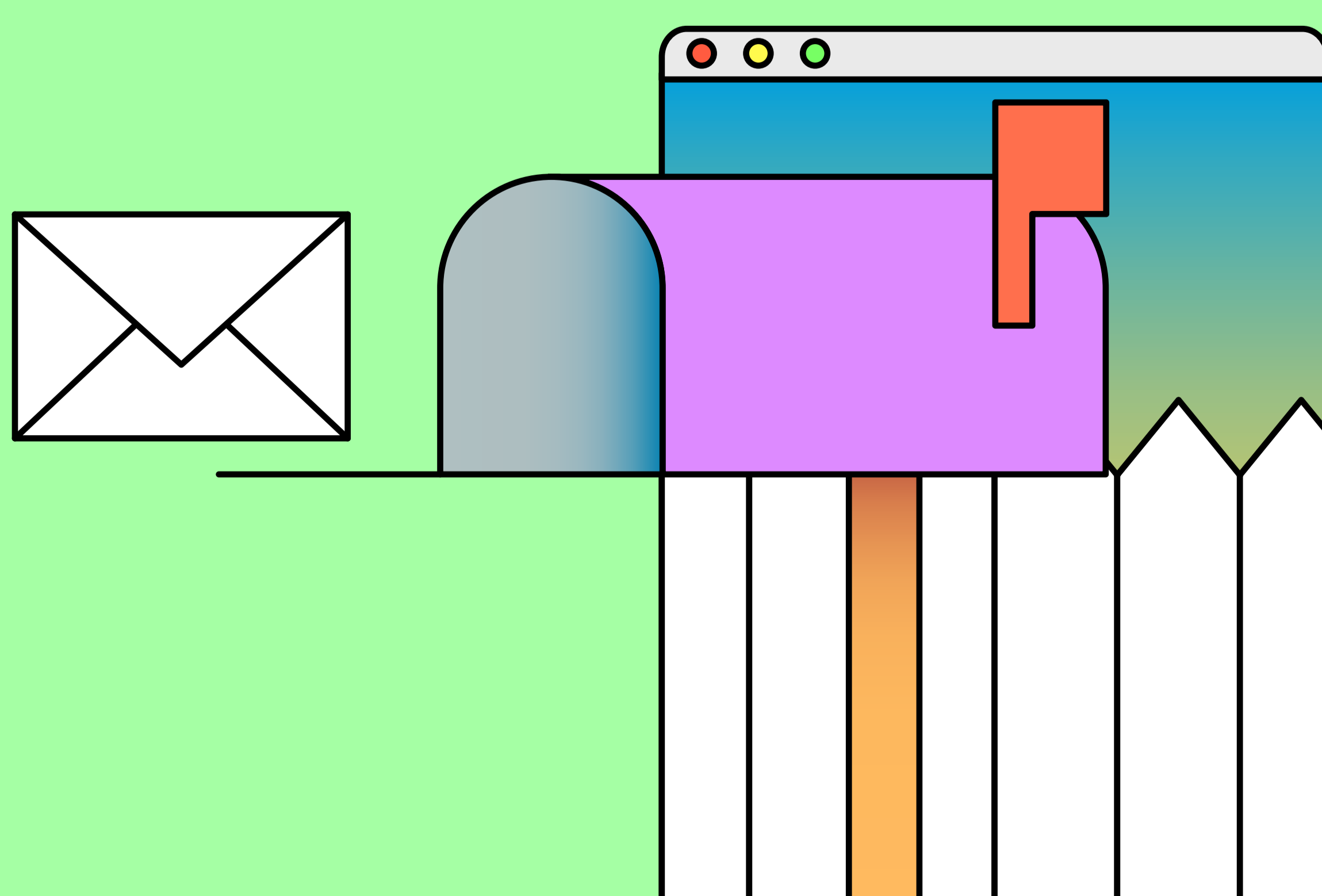
[DONATE](#)

Join Our Mailing List And Get Updates On Events, Messages, And Activities!

Email

Name

[JOIN](#)



Action	Administrative Offices	Info	Temporary Client Housing Shelter
Volunteer Contact Donate	23752 Newhall Ave. Santa Clarita, CA 91321 (661) 254-4663 Monday-Friday 8:00am - 4:30pm	Our Story Leadership Partners Programs Success Stories Events	23850 Pine Street Newhall, CA 91321 (661) 388-3002